



SCORPION 2013

The Scorpion 2013 truck mounted platform on an IVECO chassis has a telescopic boom providing a maximum working height of 19.9m and a maximum outreach of 12.5m.

Maximum basket capacity is an impressive 250kg at a restricted maximum working height of 19.5m. The Scorpion truck-mount system is designed to provide particularly fast set up and stow functions, boosting working at height productivity.



19.9m max working height



IPAF - Static Boom (1b)



Technical Specifications

Max Working Height:	19.9m
Platform Height:	17.9m
Max Working Outreach:	12.3m
Load Capacity:	250kg
Stowed Height:	2900mm
Stowed Length:	7018mm
Stowed Width:	2200mm
Basket Dimensions:	L1400 x W700 x H1100mm
Outrigger Footprint:	(Electro Hydraulic) 3165mm x 3820mm
Engine:	2287cc Euro 6 D-temp
Total Machine Weight:	3350kg

Optional Accessories

- Working lights chassis or basket
- Amber flashing led kit
- Chapter 8 high visibility markings
- Under-run side protection
- Personalised vehicle livery wrap
- Reversing camera
- Water / air line supply to basket
- Insulated fibre glass basket
- Electro hydraulic outriggers
- Cab air-con

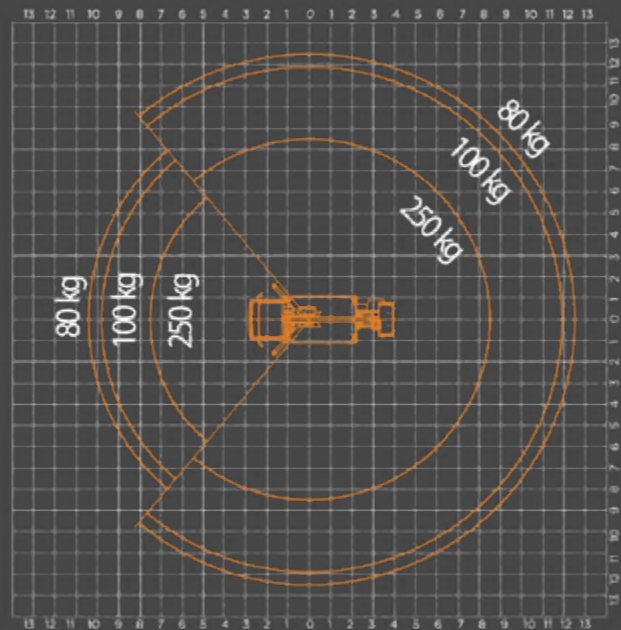
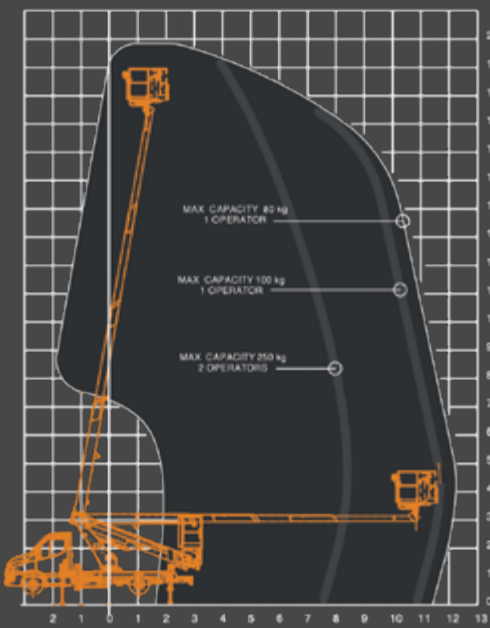


Available with under-run side protection



Like the other models, the Scorpion 2013 can be driven on a standard, full car driving licence

Working envelope



Dimensions

