

# HIRD

Est. 1983  
Celebrating 40 Years

[www.hird.co.uk](http://www.hird.co.uk)

## MFC750K - MFC750Ks

Counterbalance Floor Cranes

This classic counterweight unit has a compact footprint whilst retaining excellent lifting capacity of 750kg (500kg Ks "shorty") to a maximum height of 3.05m.

- Ideal for operation in most constrained spaces, i.e. from roof edges
- Max. hook height 3.05m
- Max. boom length 1.36m
- SWL at max boom length 155kg
- Easy to assemble and break down
- Lockable wheels

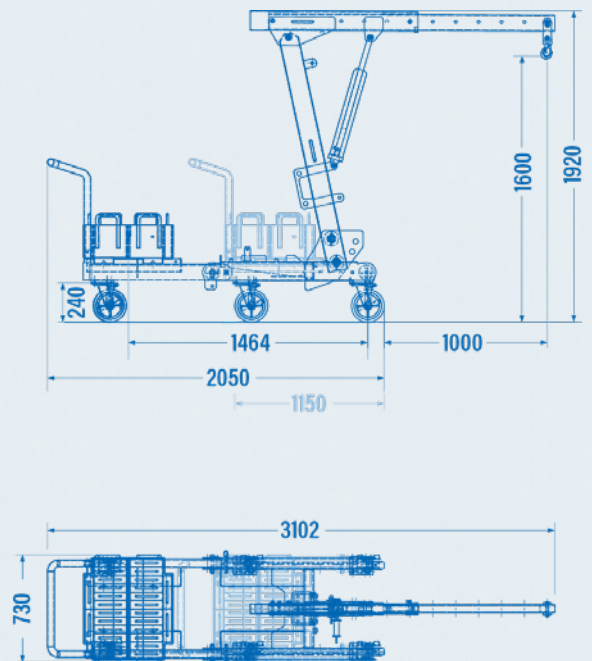


## 500 - 750kg

### Technical Specification

		MFC 750Ks	MFC750K
Max. lifting capacity	Distance from front wheel to hook at 0.52m	500kg	750kg
Weight of chassis		177kg	218kg
Weight of counterweights inc box	2 x 236kg counter weigh boxes	472kg	472kg
Max. boom extension	with additional boom	N/A	2.26m
Lifting height	Below the hook	3.05m	
Transport position	Height x Length x Width	1.00m x 1.08m x 0.65m	
Working position	Height x Length x Width	1.92m x 1.08m x 0.65m	
Loading height min.		0.85m	
Boom extension	Position between each pin	120mm	
Max. boom extension	From front of chassis	1.36m	

### Dimensions



**Please Note:** Different SWLs apply when performing negative lift duties with any form of winch / hoist



LEEA - Counterbalance floor crane



Product specifications are subject to change without notice or obligation.  
The photographs and/or drawings in this document are for illustrative purposes only.

**Northern**  
01482 227333

**Central**  
01302 341659

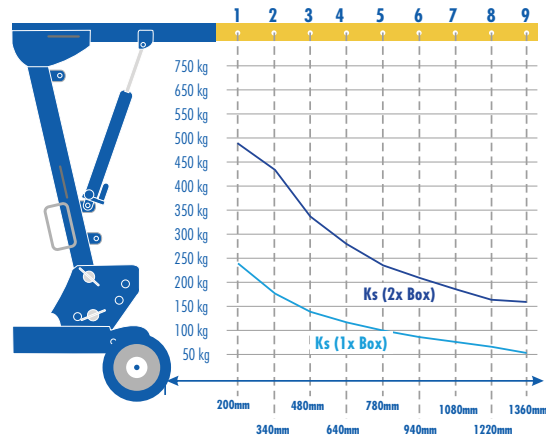
**Southern**  
0203 174 0658

# MFC750 K/Ks Adjustable Mini Floor Crane

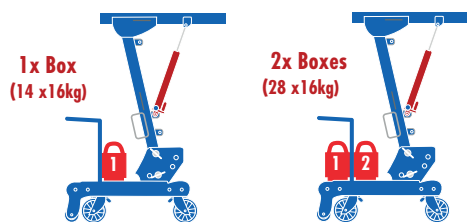
## Payloads - Outdoor Wheels

### MFC750 Ks - The Shorty

Load Position	Distance Wheel to Load	Ks 1x Box (14 x 16kg)	Ks 2x Box (28 x 16kg)
1	200mm	240kg	490kg
2	340mm	175kg	440kg
3	480mm	140kg	340kg
4	640mm	115kg	280kg
5	780mm	100kg	240kg
6	940mm	85kg	210kg
7	1080mm	75kg	185kg
8	1220mm	65kg	165kg
9	1360mm	55kg	160kg

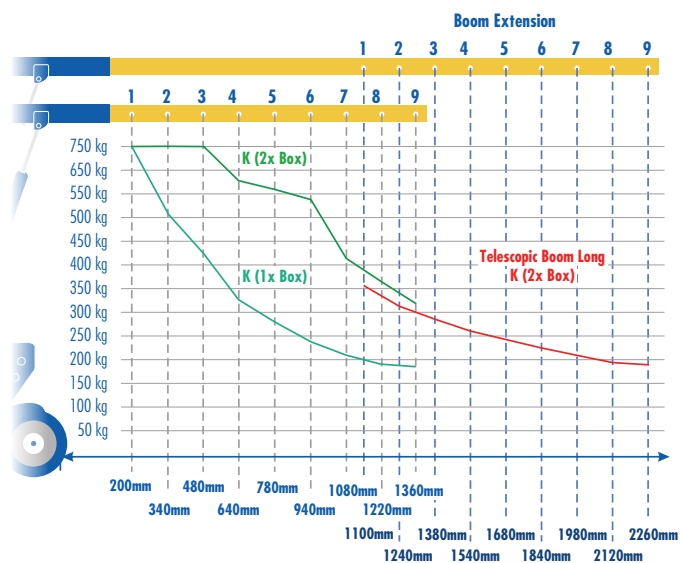


### Counterweight Box Position

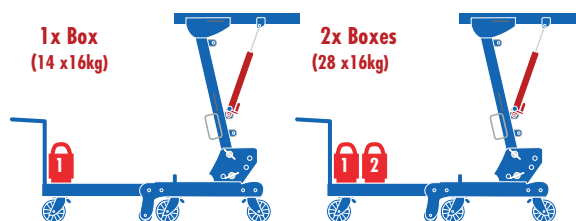


### MFC750 K

Load Position	Distance Wheel to Load	K 1x Box (14 x 16kg)	K 2x Box (28 x 16kg)
1	200mm	750kg	750kg
2	340mm	500kg	750kg
3	480mm	425kg	750kg
4	640mm	330kg	620kg
5	780mm	280kg	560kg
6	940mm	240kg	490kg
7	1080mm	210kg	410kg
8	1220mm	190kg	360kg
9	1360mm	180kg	320kg
BOOM EXTENSION			
1	1100mm		352kg
2	1240mm		318kg
3	1380mm		288kg
4	1540mm		262kg
5	1680mm		243kg
6	1840mm		225kg
7	1980mm		210kg
8	2120mm		198kg
9	2260mm		187kg



### Counterweight Box Position



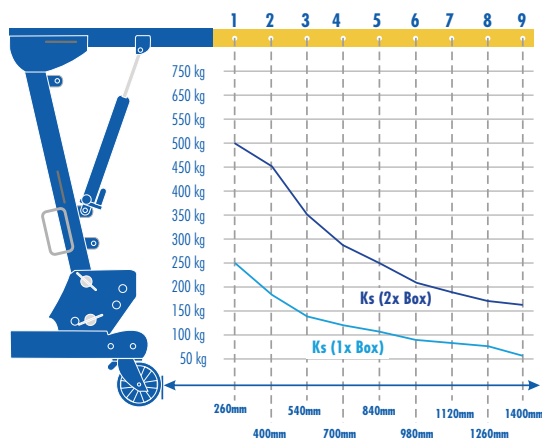
Product specifications are subject to change without notice or obligation. The photographs and/or drawings in this document are for illustrative purposes only.

# MFC750 K/Ks Adjustable Mini Floor Crane

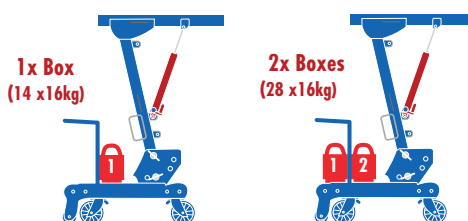
## Payloads - Standard Wheels

### MFC750 Ks - The Shorty

Load Position	Distance Wheel to Load	Ks 1x Box (14 x 16kg)	Ks 2x Box (28 x 16kg)
1	260mm	250kg	500kg
2	400mm	185kg	450kg
3	540mm	147kg	350kg
4	700mm	120kg	290kg
5	840mm	105kg	250kg
6	980mm	90kg	215kg
7	1120mm	80kg	190kg
8	1260mm	70kg	170kg
9	1400mm	60kg	160kg

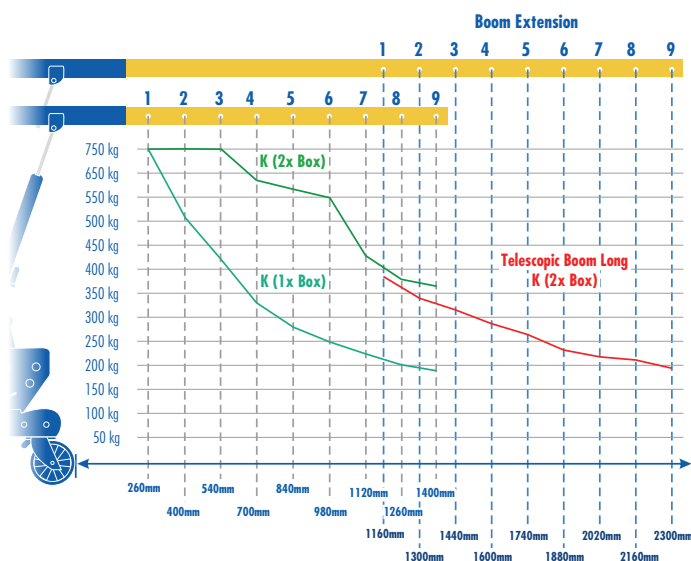


### Counterweight Box Position

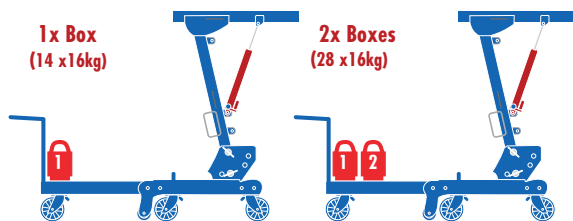


### MFC750 K

Load Position	Distance Wheel to Load	K 1x Box (14 x 16kg)	K 2x Box (28 x 16kg)
1	260mm	750kg	750kg
2	400mm	508kg	750kg
3	540mm	429kg	750kg
4	700mm	334kg	630kg
5	840mm	285kg	575kg
6	980mm	250kg	550kg
7	1120mm	220kg	425kg
8	1260mm	200kg	375kg
9	1400mm	190kg	365kg
BOOM EXTENSION			
1	1160mm		382kg
2	1300mm		345kg
3	1440mm		311kg
4	1600mm		281kg
5	1740mm		262kg
6	1880mm		243kg
7	2020mm		225kg
8	2160mm		213kg
9	2300mm		198kg



### Counterweight Box Position



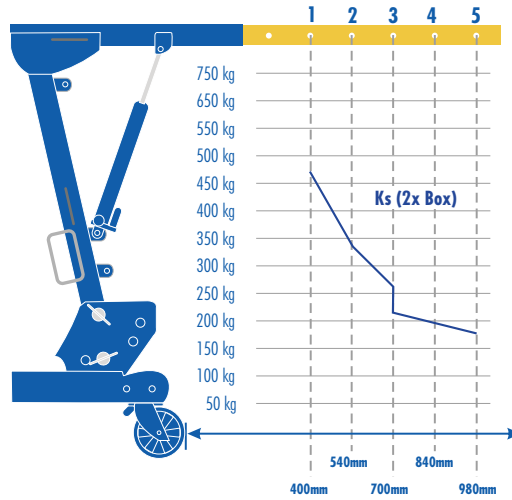
Product specifications are subject to change without notice or obligation. The photographs and/or drawings in this document are for illustrative purposes only.

# MFC750 K/Ks Adjustable Mini Floor Crane

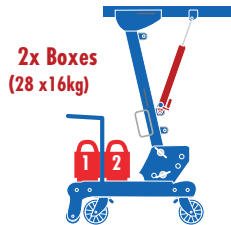
**Payloads - Dynamic Payload with any form of winch / hoist**

## MFC750 Ks - The Shorty

Load Position	Distance Wheel to Load	Ks 2x Box (28 x 16kg)
1	400mm	463kg
2	540mm	345kg
3	700mm	263kg
4	840mm	215kg
5	980mm	185kg

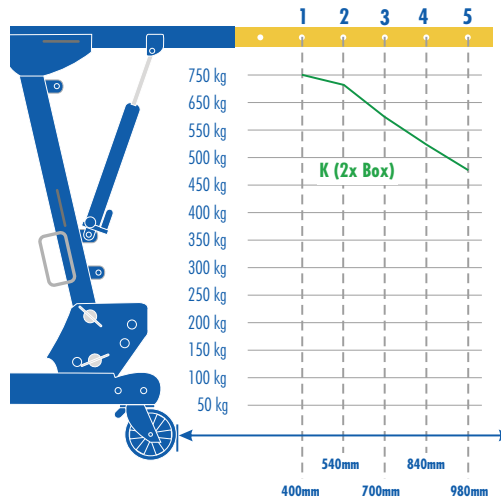


**Counterweight Box Position**

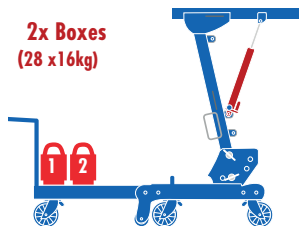


## MFC750 K

Load Position	Distance Wheel to Load	K 2x Box (28 x 16kg)
1	400mm	750kg
2	540mm	733kg
3	700mm	617kg
4	840mm	538kg
5	980mm	471kg



**Counterweight Box Position**



Product specifications are subject to change without notice or obligation. The photographs and/or drawings in this document are for illustrative purposes only.