



Est. 1983
Celebrating **40 Years**

www.hird.co.uk

CC985S-1

(4.9t x 2.1m)

Maeda Crawler Crane

Flexible and productive, the CC985 crawler crane delivers excellent lifting performance across rough terrain without the need for outriggers.

With a 16.5m working height, 7" multi function monitor and a massive 2,000kg pick and carry capacity, this crane offers safe and comfortable operations coupled with great lifting duties.



4.9t x 2.1m

Technical Specification

Max. lifting capacity	4.9t x 2.1m
Lifting height	16.5m x 1,400kg with Fly-Jib 20.2m x 430kg
Max. working radius	14.67m x 200kg
Boom length	4.78m - 15.78m
Power source	Diesel
Weight	9,450kg with Fly-Jib 9,630kg

Features include

- Optional Fly Jib Attachment
- 2,000kg Pick & Carry Duty
- 7 inch Multi Monitor
- Rear View Camera
- Automatic Pentagonal 5-Section Boom



CPCS - A66D - 360 Pick & Carry

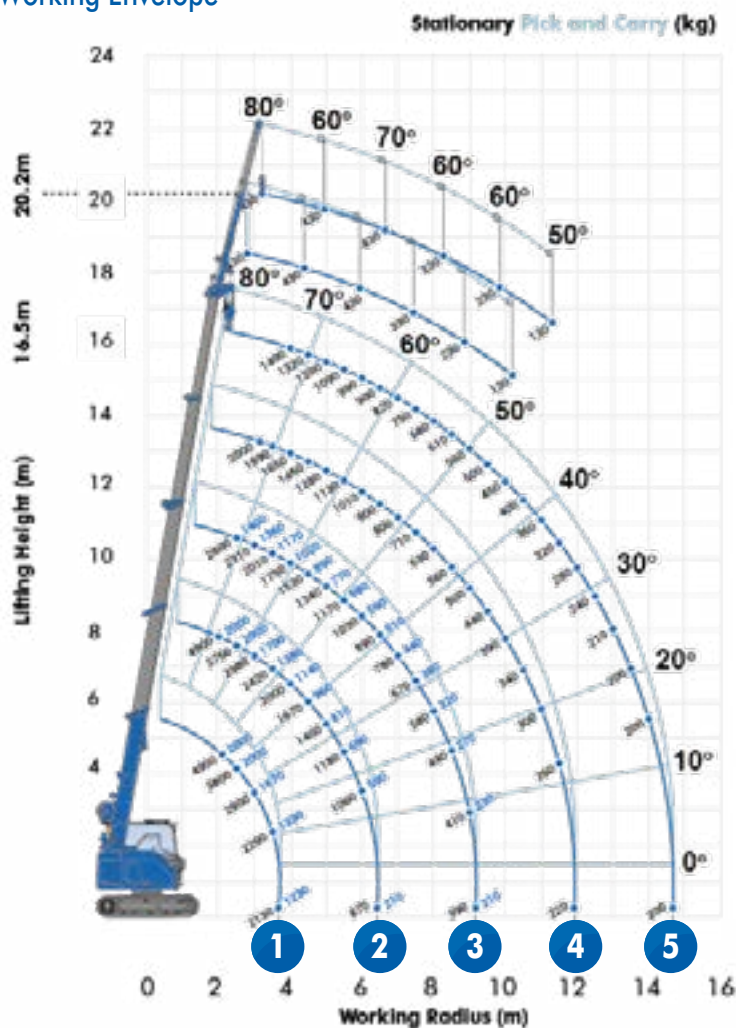


Northern
01482 227333

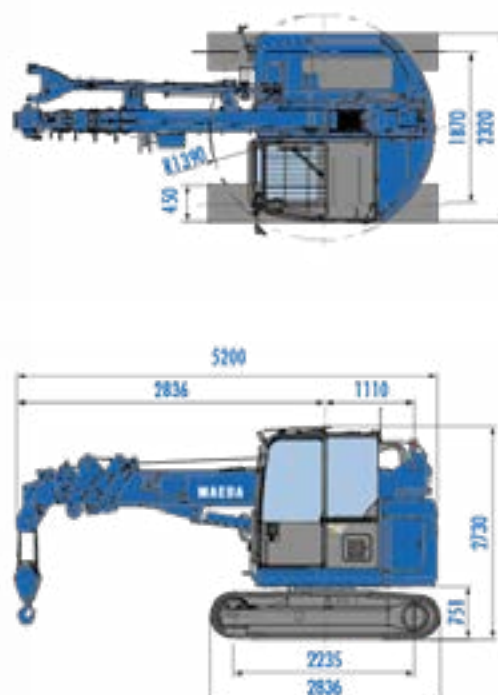
Central
01302 341659

Southern
0203 174 0658

Working Envelope



Dimensions (mm)



Max. Reach
Below Ground
Level

Rated Loads

1

First stage extended 3.67 - 4.78m boom length

Working radius	m up to	2.0	2.1	2.5	2.7	3.0	3.15	3.5	3.67
Stationary	kg	4,900	4,900	3,800	3,310	2,900	2,640	2,290	2,130
Pick and Carry	kg	2,000	2,000	2,000	1,950	1,670	1,550	1,330	1,230

2

Second stage extended 4.78 - 7.53m boom length

Working radius	m up to	2.0	2.1	2.5	2.7	3.0	3.15	3.5	3.67	4.0	4.5	5.0	5.5	6.0	6.42
Stationary	kg	4,900	4,630	3,760	3,410	2,980	2,800	2,420	2,270	2,000	1,670	1,400	1,180	1,000	870
Pick and Carry	kg	2,000	2,000	2,000	1,940	1,700	1,590	1,380	1,290	1,140	960	810	690	590	510

3

Third stage extended 7.53 - 10.28m boom length

Working radius	m up to	2.0	2.1	2.5	2.7	3.0	3.15	3.5	3.67	4.0	4.5	5.0	5.5	6.0	6.42	6.5	7.0	7.5	8.0	8.5	9.0	9.17
Stationary	kg	2,600	2,600	2,600	2,520	2,310	2,220	2,010	1,920	1,750	1,530	1,340	1,170	1,030	910	890	780	670	580	490	410	390
Pick and Carry	kg	1,400	1,400	1,400	1,400	1,360	1,300	1,170	1,120	1,020	890	770	680	590	520	510	440	380	320	270	230	210

4

Fourth stage extended 10.28 - 13.03m boom length

Working radius	m up to	2.0	2.1	2.5	2.7	3.0	3.15	3.5	3.67	4.0	4.5	5.0	5.5	6.0	6.42	6.5	7.0	7.5	8.0	8.5	9.0	9.17
Stationary	kg	2,000	2,000	2,000	2,000	2,000	2,000	1,890	1,880	1,650	1,450	1,280	1,130	1,010	910	900	800	710	630	560	500	480
Working radius	m up to	9.5	10.0	10.5	11.0	11.5	11.92															
Stationary	kg	440	390	340	300	260	220															

5

Fourth stage extended 13.03 - 15.78m boom length

Working radius	m up to	2.5	2.7	3.0	3.15	3.5	3.67	4.0	4.5	5.0	5.5	6.0	6.42	6.5	7.0	7.5	8.0	8.5	9.0	9.17
Stationary	kg	1,400	1,400	1,400	1,400	1,400	1,400	1,320	1,200	1,090	990	920	900	820	750	680	610	560	540	
Working radius	m up to	9.5	10.0	10.5	11.0	11.5	11.92	12.0	12.5	13.0	13.5	14.0	14.67							
Stationary	kg	500	450	400	360	320	280	280	240	210	200	200	200							

Product specifications are subject to change without notice or obligation.
The photographs and/or drawings in this document are for illustrative purposes only.

