

MFC750K

Counterbalance Floor Cranes

This classic counterweight unit has a compact footprint whilst retaining excellent lifting capacity of 750kg to a maximum height of 3.05m.

- Max. lifting capacity 750kg
- Max. hook height 3.05m
- Perfect for office, showroom and shop front glazing, fitting below architectural features when used in conjunction with a vacuum lifter
- Can be quickly and easily assembled and disassembled for transport
- Lockable wheels

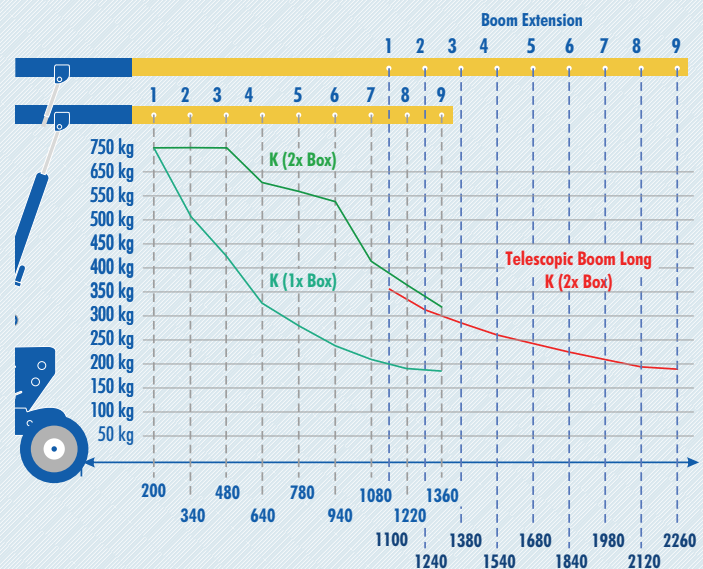


750kg

Technical Specification

Lifting height	Below the hook	3.05m
Transport position	Height x Length x Width ²	1.00-1.92m x 1.20m x 0.65m
Working position	Height x Length ¹ x Width ²	1.92m x 1.20m x 0.65m
Loading height min.		0.85m
Boom extension	Each position	120mm
Boom length	Max.	1.20m
Max. lifting capacity	Distance from front wheel : hook = 0.52m	750kg
Weight of chassis	incl. boom ³	160kg
Weight of counterweights	(28 x 16kg) incl. 2 Boxes	490kg

Rated load diagram



LEEA - Counterbalance floor crane



Product specifications are subject to change without notice or obligation. The photographs and/or drawings in this document are for illustrative purposes only.

Please Note: Different SWLs apply when performing negative lift duties with any form of winch / hoist